

Dining | Shopping | Attractions | History | Lodging

GO! Guide

2023 Edition

Jefferson County

Nebraska



VisitOregonTrail.org



1128 Elm Street
(2 Blocks South of Hwy 136)
Fairbury, Nebraska

(402) 671-6879
fairburymuseum@diodecom.net
Facebook.com/FairburyCityMuseum

Annual Car Show - Downtown Square - Sunday, Sept. 10

Jefferson County Veterans' Memorial



*Inside the
Fairbury
City Park*

Completion Date:

Memorial Day, 2023

Learn More: Mick Suey 402-300-0906



**Explore Fairbury's past with
our many exhibits**

Fairbury is fortunate to have two museums - Fairbury City Museum & Rock Island Railroad Museum

Jefferson County Historical Society

Collecting, preserving, and teaching the history of Jefferson County, Nebraska since 1955.

Visit our historic sites located throughout Jefferson County including...



Rock Island Railroad Museum
Fairbury, NE



W.C. Smith House
& Lime Kiln
rural Fairbury, NE



District 10 Schoolhouse
near Alexandria, NE

For tours and more information contact us today!

910 Bacon Road, Fairbury, Nebraska
(402) 729-5131

Important Numbers to Know Emergency 911

Sheriff 402-729-2284
Road Conditions 511
Hospital 402-729-3351
Library 402-729-2843
Fairbury Clinic 402-729-3361
Courthouse 402-729-6818
Local Transportation
(Handi-Bus) 402-729-6475



This publication was created by
Nels Sorensen and Diane Schutt.
Go!Guide and All Content © 2023
Brainchild Concepts.

Cover photography by Lana Grammer.
Photography by Shaun Friedrichsen,
Helen Madrid, Ashley Hattle,
Kristen Krause and Jenny Slater.
Content may not be reproduced
without express written permission
of the copyright holders.

Table of Contents

Town Profiles	2-6
Museum Spotlight	7
Places to Eat	8
Attractions	10-13
County Map	14
Fairbury Map	15
Lodging	16
Camping	17
Cemeteries	20
Churches	21
Local Services	22-23
Hunting & Fishing	24
Rock Creek Station	26
Events Calendar	28



Produced by the Jefferson County
Visitor's Committee in cooperation with
the Fairbury Chamber of Commerce.

Jefferson County Visitors Committee

402-729-3000 | jcvvc@diodecom.net
www.visitoregontrail.org

Fairbury Chamber of Commerce

518 E St. | 402-729-3000
www.fairburychamber.org
fairburychamber@diodecom.net

Jefferson County Origins Reveals

Complicated Beginnings

Present day Jefferson County officially came into existence in the fall of 1871. Prior to this, the area now known as Jefferson County followed a complicated path to its creation.

Initially, Jefferson County may have been included in the domain of Richardson County since Nebraska's first counties bordered the Missouri River. The western boundary of the state was in the unknown wilds of the Rocky Mountains. Richardson County, which was directly east of the Missouri river, claimed the right to levy and collect taxes in all territory west of it.

According to research done for "A Pictorial History of Jefferson County, Nebraska," "Prior to the formation of Gage and Jefferson counties, a strip of land 24 miles wide directly north of the 40th parallel (Kansas-Nebraska line), lying west of the Big Blue River, was called Jones County on territorial maps. However, Jones County had no legal existence and caused confusion for many years.

Jones County existed for only a few years, since few settlers lived in the area prior to 1860. It is the first pioneers that deserve the credit for shaping the territory into the condition to later be developed by the people residing here. Before the first white men came, the county was populated by Otoe Indians and wandering tribes of Pawnees and other Indians traveling to and from their hunting grounds. Jones County held its first election in the spring of 1861 and organized in 1862.

At a point in 1867, the legislature of the newly recognized state of Nebraska passed an act to enlarge Jones County by adding to it the county on the west and calling it Jefferson. For nearly five years, the present counties of Thayer and Jefferson were mapped and governed as Jefferson County. This proved unsatisfactory for its residents.

In 1871, D.C. Jenkins introduced a bill in the Legislature to divide Jefferson County with the Sixth Principal Meridian being the division line. This was finalized in the fall of 1871, and two complete sets of county officers were elected, with the establishment of Thayer County to the west of the line and Jefferson County to the east.

For almost 150 years, Jefferson County has been home to generations of individuals and families who built a life on the plains. Despite the struggles faced by every age in this time span, its citizens have been able to create towns and villages; excited about its possibilities, committed to its success and secure in its sense of place in history. This is the legacy, which will be passed on to future generations who also call Jefferson County home.

**THE 6TH ANNUAL
MIDWEST MIDGET CHAMPIONSHIP
JEFFERSON COUNTY SPEEDWAY
FAIRBURY, NEBRASKA
JULY 13TH-15TH, 2023**

\$10,000 TO WIN...\$500 TO START

****PRACTICE AND FREE SHRIMP BOIL/BBQ ON THURSDAY, JULY 13TH****
-USAC MIDGETS + JAYHUSKER NON-WING AND RESTRICTOR MICROS-

Friday, July 14th - Complete Show General Admission is \$20 H.S. Students and Younger are \$5 All Access Pit Passes are \$35	Saturday, July 15th - Complete Show General Admission is \$30 H.S. Students and Younger are \$5 All Access Pit Passes are \$35
---------------------------------------------------------------------------------------------------------------------------------------------------------	-----------------------------------------------------------------------------------------------------------------------------------------------------------

Reserved two day passes available at JeffersonCountySpeedway.com
JEFFERSONCOUNTYSPEEDWAY.COM 405-823-8095

Town Profiles

Daykin

Platted in 1887, Daykin began as land homesteaded by William E. Ide and sold to John N. Daykin. He sold the land to two Fairbury residents, John Kesterson and George Cross, who began the village of Daykin on June 8, 1887. Attracted by the ideal farming conditions, original residents were of German and Czech ancestry.

Initial rail lines paved early success for the community. The first building, Jefferson County Bank, survived the Great Depression and continues as Heartland Bank today.

Windmills played a large role in the town's history. Water was provided by windmills from a public well, many private wells and individual windmills. This status was also noted by a feature on "Ripley's Believe It or Not" calling Daykin the "Town of Windmills" because of their popularity.

Diller

Named for Samuel Diller, an early settler, Diller was platted on Oct. 1, 1880 and developed from the building of the Burlington and Missouri Railroad. Diller encouraged many of his friends from Cumberland County, Pennsylvania, to come to Nebraska, even loaning money to many of the first settlers to purchase land. His home served as the first school and church. He also donated the land for a cemetery.

Diller has been home to several businesses, including a newspaper, a hotel, a bank, an opera house and even an orphanage.

The phone company, started in 1899, has evolved into Diode Communications and Technologies. It continues to serve Diller and surrounding communities.

Endicott

Settled as early as the 1850s and 1860s because of its fertile land and proximity to the Oregon Trail, expansion by the St. Joe and Denver City Railroad enticed more residents to move to the area. Early homesteaders Billy Smith and Edward Hawkes saw the potential for a town and platted it in 1880 when the post office was officially established. Railway officials named Endicott after William Endicott of Massachusetts, Secretary of War under President Grover Cleveland.


At its height, Endicott included a hotel, built by the railroad, and several businesses. The hotel still exists today. The first school, taught in a dugout, was later replaced with a wooden structure in 1885. When fire destroyed that building in 1904, a two-story brick school was built at the same site and used for years as both an elementary and high school.



**Korbel
Drug**

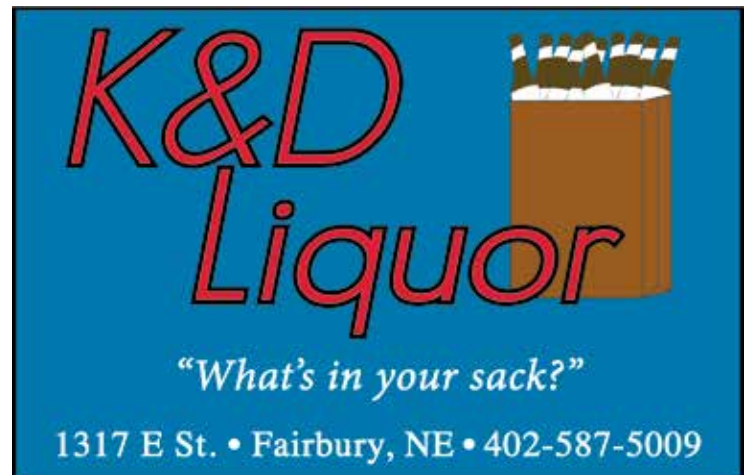
405 Fifth Street
Fairbury, NE 68352

402-729-3104



Gerdes-Meyer
Funeral Home

2414 H St. | Fairbury
402-729-5656
www.gerdesmeyerfh.com



**K&D
Liquor**

"What's in your sack?"

1317 E St. • Fairbury, NE • 402-587-5009



ENDICOTT

BUILDING LEGACIES FROM THE GROUND UP



WORK FOR A COMPANY THAT CARES
TRABAJA PARA UNA EMPRESA QUE SE IMPORTA

Apply Now!



Aplica ya !

endicott.com 402-729-3315



On the BRICKS

Lofts and Venue

***Located in the heart of
Fairbury Nebraska's
historic downtown!***



Stylish hotel luxury suites
Choose from one of our 8 suites each
with kitchen, on site free laundry
and free Wi-Fi



***Wedding venue and
event center***
Let us host the event of your dreams.
Can accommodate large groups.
Check our events calendar at
OnTheBricksVenue.com

OnTheBricksLoftsAndVenue.com
402-318-7447 | OnTheBricksLoftsAndVenue@gmail.com

Town Profiles

Gladstone

The building of the Chicago, Kansas and Nebraska Railroad, spurred the growth of Gladstone. James Hubble bought 80 acres of land from German settler Elias Weiker and quickly platted 23 blocks for the town in 1886. Hubble had great plans for the little town, but no major township developed.

Gladstone did boast several businesses, including a livery, multiple grocers, blacksmiths, a lumberyard, a hotel, a bank and a pool hall in its prime. Two grain elevators also engaged in commerce until one burned and the other eventually closed. The Depression drove many businesses to other areas.

Two churches built east and west of town are called Gladstone churches since no such facility was ever built in Gladstone.

Harbine

Created in 1886 as a result of the Chicago, Rock Island and Pacific Railroad in the area, Harbine is situated on land donated by Fredrick Sandman, George H. Hansen and Charles Letton. It was named for a prominent Fairbury banker and land promoter Col. Thomas Harbine.

In its history, the town included a blacksmith shop and wagon maker, a physician, a farm implement dealer, a hotel, a general store and a windmill and pump business. One of the first buildings was a two-story depot for the Rock Island Railroad, complete with living quarters upstairs. Harbine was also home to a creamery, which produced and shipped cheese and butter all over the United States at one time.

A tornado in 1903 leveled the Congregational Church, one of three churches to exist in the town's tenure. Disaster by recession, fire and tornado took a toll on the community. The town's bank closed in 1933. A fire in 1946 destroyed many of the businesses and they never rebuilt.

Jansen

Russian settler Peter Jansesn (Jansen) and a small group of 50 fellow Mennonites left Russia in 1873 and purchased 20,000 acres from the Burlington and Missouri Railroad where they established seven settlements. With word of the Chicago, Rock Island and Pacific Railroad coming through the area, Jansen bought 80 more acres and on Aug. 20, 1886, mapped out the town.

Railroad officials honored Jansen by naming the new town after him. Within one year, 13 businesses had been built, including a bank. Founded by Jansen, the bank has operated continuously since that time, though it has changed leaders and names.

Regain and Retain Excellent Oral Health!



Fairbury Dental Associates

Jason M. Grant, D.D.S.

For Appointments call: 402-729-6177

416 4th Street, Fairbury, NE 68352

www.FairburyDental.com



**AMERICAN
NATIONAL BANK**

Together, we can do more.

30 locations in Nebraska & Iowa

www.american.bank

Member FDIC



goebelconst.com

GOEBEL CONSTRUCTION INC.

**40 Years Of Proven and Dependable Experience
Serving Southeast Nebraska And Northern Kansas**

Our Services



ELEVATOR

Legs | Cups | Belting | Storage | Aeration | Conveyors |
Dryers | Bulk Weight Systems | Loadout Systems | O.H.
Hoppered Tanks | Cleaners



FEEDMILL

Rollers, Hammer & Pellet Mills | Mixers | Blenders |
Bagging Systems



FERTILIZER

Loaders | Augers | Conveyors | Blenders



SAFETY CONTROL

Motion & Misalignment Monitors | Heat & Bearing
Detection

**Goebel
Construction
is a turn key
service
organization
designed to
service
intra-state grain
elevator
operations
through
flawless
design,
construction
and
maintenance.**

Goebel Construction Inc.

Highway 136, P.O. Box 134
Jansen, NE 68377

Phone: 402-424-2055
800-642-6785

Plymouth

Of all the towns in Jefferson County, this community is one of the most interesting with two histories and two sites.

The original town of Plymouth began with 10 ministers from Iowa, Illinois, Massachusetts and Wisconsin, one of which was a land agent for the Burlington and Missouri River Railroad. On Sept. 18, 1872, leaders planned to create a “Plymouth of the Prairies, a colony of conscience” and asked that “no [one] may join us who is not of unblemished morals”. The sale of alcohol was also banned. The streets were named after Pilgrim leaders and most of the original settlers were of English descent. The early town flourished with several businesses and a post office.

Unfortunately, the railroad lines were not built and the town’s population quickly left and moved their businesses to more prosperous places.

A new city began on a new site in April 1884 when the Chicago, Rock Island and Pacific expanded its line from Lincoln to Jansen. Because the train would not stop on the uphill grade, a depot was built three miles north and one mile east of the old town. The post office moved to the depot and the name went with it. In less than a year the population reached over 200 with German settlers and many citizens from Ontario, Canada. The town’s old rules did not apply. At its peak in 1910, approximately 400 citizens lived in Plymouth with 62 businesses. All that remains of Old Plymouth today is a cemetery and signs that mark the site.

Reynolds

Again, the railroad expansion helped found Reynolds in 1880. Homesteaders William Menary and W.H. DeBuse enticed the Republican Valley Railroad to build its railroad through DeBuse’s property. The name Reynolds was given to honor the father of a conductor on the Republican Railroad.

The creation of Reynolds also resulted in the decline of Rose Creek City since the railroad had bypassed it. Many of the buildings here were put on skids, including the blacksmith shop, drug store, church, hotel and school and pulled by horses over the hills to Reynolds.

Steele City

Small, but surrounded by its pioneer past, Steele City includes a 19th century stone church, a 1900 stone livery stable and a brick bank museum. Modern day downtown includes a restaurant and bar and a small post office. Visitors can even water their horses in the historic spring-fed troughs. Living history demonstrations occur each summer and during the annual Steele City Flea Market week-end each September.

Dave Banahan

Trucking & Excavating, LLC

310 E Main Street
Steele City, NE 68440

Ph. 402-442-2247
Cell 402-239-7441



Countryside Veterinary Clinic

Larry A. Winter, D.V.M. | Janet L. Winter, D.V.M. | Jonathan L. Winter, D.V.M.

- Large and Small Animals
- Grooming and Boarding
- Emergency Medical Services



Like Us on Facebook

3030 Industrial Drive, Fairbury, NE 68352

402-729-2204

www.wintervets.com

POLLMAN

HEATING • A/C • PLUMBING

Heating, Air & Plumbing Sales & Service

Commercial • Residential • New Construction
Duct Cleaning • Plumbing
Trenching & Backhoe Service
Certified Septic System Installer



TEMPSTAR
Heating and Cooling Products
Quality you can feel

Roger & Pam Pollman, Owners

324 3rd Street | Fairbury
402-729-3586

pam@pollmanllc.com
cell: 402-239-2086



A look into the past The Campbell Bros. Circus mural fills the north wall outside Globe Rexall Pharmacy on 5th Street.

Downtown Fairbury Offers Many Points of Interest

With buildings dating from the turn of the 20th century, Fairbury's downtown earns its historic reputation honestly. With the courthouse as the centerpiece of a quaint downtown "square," the area highlights small town America at its best with antique stores, floral shops, service and professional businesses and a variety of miscellaneous shops and restaurants. The downtown area draws visitors with its original brick streets, detailed building facades and the courthouse's plethora of shade trees. Side streets also offer their own bits of history relived with a modern art mural on the Globe Rexall Pharmacy, the renovated J.C. Penney building now housing the corporate offices of Lambert Vet Supply and some of the oldest buildings in the business district.

Take a look at what the area has to offer. While you are at it, make sure to check out these buildings. Jefferson County Courthouse located in Fairbury and constructed in 1891 of hand-cut limestone, still boasts antique ceramic-fronted fireplaces in some offices. A unique feature is the antique furniture in the courtroom. Newly recreated replicas of original statues grace three sides at the top of the building. Remodling in 2016 and 2017 has strived to preserve the building's historic style while adding security and function.

Another interesting aspect of downtown Fairbury, the Campbell Bros. Circus mural, on the north exterior wall of Globe Rexall Pharmacy, depicts scenes that were reminiscent when the Campbell Bros. Circus stationed their winter home in Fairbury. From 1895 to 1913, the circus always opened their season in Fairbury, but traveled nationwide.




GrandView EyeCare

436 Lincoln Ave
Hebron, NE 68370
(402)768-6651

523 E St.
Fairbury, NE 68352
ph (402)729-6162

[f/GrandViewEyeCare](https://www.facebook.com/GrandViewEyeCare)



The most capable hands this side of yours.

Nutrien
Ag Solutions™

Loveland Products
56908 Hwy 8
Fairbury, NE 68352
402-729-4100



Fairbury Chamber of Commerce
518 E Street, Fairbury, NE 68352
402-729-3000
www.FairburyChamber.org
Like us on Facebook
@FairburyChamberOfCommerce

Fairbury City Museum

1128 Elm Street, Fairbury

Located in the former West Ward Elementary School, the Fairbury City Museum is an exciting educational experience in the history of Fairbury and Jefferson County. Organized thematically, the museum features an exhibit of local fossils from the Cretaceous and Pleistocene periods, a room of military items dating back to the Civil War, memorabilia from the world famous Campbell Brothers Circus, which wintered in Fairbury in the early 1900s, and many other displays depicting business and community growth, which allow visitors to relive Fairbury's colorful past. A variety of events take place at the museum. The annual car show, the 2nd Sunday in September around the historic square in downtown Fairbury.



Open: Sat-Sun 1-4 p.m. or by appointment
Contact Info: 402-671-6879
fairburycitymuseum@diodecom.net



Prairie View Industries

We are the difference!

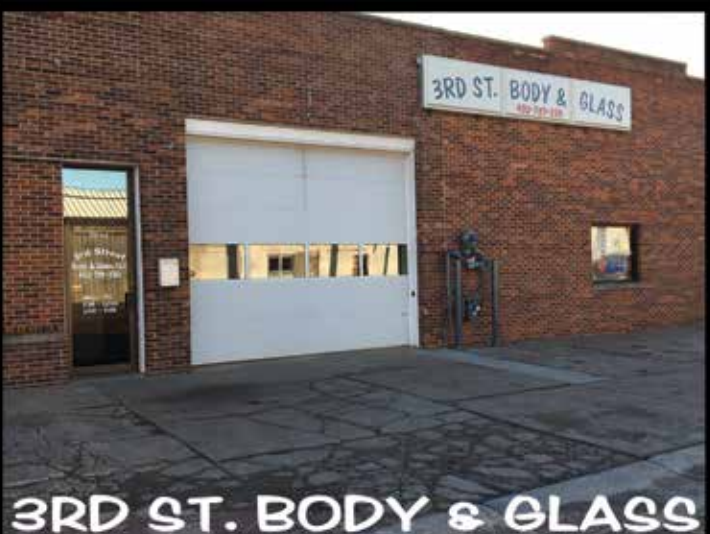
Access Ramps • Material Handling
Recreational • Trailer Outfitters

Prairie View Industries
P.O. Box 575

Fairbury, NE 68352-0575

800-554-7267 | FAX 402-729-4058

info@pviramps.com | www.pviramps.com



3RD ST. BODY & GLASS

Scott Nichelson Kurtis Dittmer

Collision Repair,
Windshield Replacements,
Window Tinting
Rock Chip Repair, Paintless Dent Repair
& More

520 3rd Street, Fairbury, NE
402-729-2311

Places to Eat & Specialty Food/Drink

Fairbury

Belle Rose Boutique & Coffee

402-587-5051

412 E St.

Facebook: @belleroseboutiqueandcoffee

Casey's Pizza

402-729-6664

622 E St.

Facebook: @Caseys

Classic Cones ^[Seasonal]

402-587-0166

611 6th St.

Facebook: @ClassicConesFairbury

Fairbury Nutrition

402-729-3301

1834 K St.

Facebook: @FairburyNutrition

Griffey's Steakhouse & Lounge

402-729-9951

400 4th St.

Facebook: Griffey's Steakhouse and Lounge

Harvest Chinese Restaurant

402-729-6233

616 E St.

Jalisco Mexican Restaurant

402-729-2197

417 D St.

Facebook: Jalisco Mexican Restaurant

Pizza Hut

402-729-6106

505 14th St.

Facebook: @PizzaHutFairburyE14thSt

Ray's Apple Market Deli

402-729-2355

1415 K St.

Rowdy's Steakhouse

402-729-5083

321 F St.

Facebook: @RowdysSteakhouse

Runza

402-729-5248

2630 Industrial Drive

Facebook: @RunzaRestaurants

Subway

402-729-3995

1413 K St.

Facebook: @subway

Daykin

Road Runner Bar & Grill

402-446-7346 705 Francis St.

Facebook: Road Runner Bar and Grill in Daykin, Nebraska

Diller

The Field Sports Bar & Grill

402-793-8557

415 Commercial St.

Facebook: @thefieldsportsbarandgrill

The Store

402-793-5840

601 Commercial St.

Facebook: @dillerlockercompany

Endicott

Criner's Corner Bar and Grill

402-729-3571

201 Roscoe St.

Facebook: Criner's Corner Bar And Grill

Harbine

Side Trek

402-754-4391

Hwy 136

Facebook: @sidetrekharbine

Plymouth

Bart's Bar and Grill

402-656-BEER

303 E Main

Facebook Group: Bart's Bar and Grill

P-Town's Daily Grind

402-200-8646

316 N. Madison Ave

Facebook: @dailygrindboutique


Steele City

The Salty Dog -

402-442-2233

200 W Main St.

Facebook Group: Fans of the Salty Dog Saloon



Host your next event at the
historic Fairbury Elks Lodge
Fairbury Elks Lodge #1203
525 G Street, Fairbury
For more information call 402-729-2090



Fairbury Nutrition
Delicious nutritional shakes,
loaded teas and coffees!
Facebook: @fairbryntimer
Instagram: @fairbryntimerne
1834 K Street, Fairbury
402-729-3301

Home of the Elephant Ear

ROWDY'S

STEAKHOUSE

402-729-5083 321 F Street, Fairbury

Mon. - Thurs. 11 a - 8 p | Fri. 11 a - 9 p | Sat. 5 - 9 p



JALISCO

Mexican Restaurant

FAIRBURY
Nebraska
417 D Street
402-729-2197

Hours
Mon-Sat:
11 a - 2 p & 5 - 9 p
Sun: Closed

LINDSBORG
Kansas
107 North Main
785-227-8987



**2630 INDUSTRIAL DR
FAIRBURY**

Facebook Instagram Twitter YouTube

Open 7 Days A Week
Express Lunch Monday-Friday




402-729-6106
505 E 14th Street | Fairbury

Griffey's

Steakhouse & Lounge

Fine Dining for the Whole Family

Featuring:



Open:

Tues-Thurs 6a-2p ~ Breakfast & Lunch
Fri-Sat 6a-2p, 5-9p ~ Breakfast, Lunch & Dinner
Sun 7a-2p ~ Breakfast & Lunch

Southside Downtown Courthouse Square
Fairbury, NE
400 4th Street | 402.729.9951

Ice Cream Now featuring Twist, Malts, Shakes & More
Open May - September, Weather Permitting

Classic Cones



402-587-0166
611 6th Street, Fairbury

First weekend in June
Dog Days of Summer
Ride in Bike Show

Closed Mondays & Tuesdays



THE SALTY DOG

Infamous Midwest Watering Hole

STEELE CITY, NE

Home of the Salty Dog Burger
Steak Fridays & Specials

What to Do & See in Jefferson County

Located 70 miles south of Lincoln and 30 minutes west of Beatrice, Jefferson County offers plenty of entertainment for those looking for a quick getaway or a longer more leisurely stay. Whether you are searching for a great antique find, exploring the region's history or settling in for a quiet weekend of camping, Jefferson County provides an excursion for almost everyone.

Alexandria State Recreation Area

56022-56032 718th Rd, Alexandria

A beautiful spot to spend a relaxing weekend, Alexandria boasts two lakes, which are ideal for fishing and canoeing. Camping facilities include, electrical hookups, playground and an RV dump station. Reach Alexandria State Rec Area by taking Highway 136 west from Fairbury for 7 miles and following the signs north and west to find the spot.



Buckley Creek Recreational Area

1 mile east and 1/2 mile north of Reynolds on 561 Ave

Created in 1971, the area provides fishing, hiking and boating as well as a nine-hole golf course featuring sand greens in the 78-acre site. Owned and maintained by the Little Blue Natural Resources District, a 20-acre lake is the centerpiece.

Limited hook-ups are available, though there is no charge for camping. Tent camping areas include restrooms, grills and fresh water. Two picnic shelters with electricity are also available.



Here for You
Generation After Generation

- Ag, commercial, consumer & mortgage loans
- Trust & estate services
- Investment & retirement planning
- Mobile banking
- Personal checking, savings and CD accounts

Visit us at our Jefferson County Locations

Fairbury Main Branch
423 5th Street
402-729-3344

Fairbury Drive In
525 F Street
402-729-5413

Daykin
306 Jefferson Street
402-446-7233

MyHeartland.Bank | Member FDIC | EQUAL HOUSING LENDER

Crystal Springs Park

Southwest of Fairbury off Crystal Springs Road

Located on the southwest edge of Fairbury, not too far south and west of the City Park, camping, fishing and family fun happen here. Campers will find RV hookups, updated showers and restrooms, picnic shelters, a horseshoe court and playground. Fishing enthusiasts will enjoy two spring-fed lakes and another man-made lake stocked with bass, catfish and blue gill, including trout in the center lake in the cooler months. Many ducks and geese also call Crystal Springs home year-round.



Cub Creek Rec Area

Southwest of Plymouth on 575 Ave between 719 and 718 Rd

Found 3 miles west and 4.5 miles south of Plymouth, a 40-acre lake nestles on 95 acres of land. Year-round activities include fishing, hiking, boating, campgrounds and hunting. Campers are offered a shelter, picnic tables, a playground, restrooms and more.



District 10 Schoolhouse

The corner of 717th Road and 559th Ave

The grounds of this old country school display monuments to the Oregon Trail, Pony Express and Mormon Trail. Located a half mile west and one mile southwest of Alexandria State Lakes, northwest of Fairbury.



BEDLAN'S

Sporting Goods

"The Sportsman's Headquarters"



NEW, USED & ANTIQUE GUNS

Authorized Dealer for:  BROWNING

 RUGER  LEUPOLD & Others

Fish Tackle - Hunting Gear

Just off Hwy 136 on E St., Fairbury, NE 68352

402-729-6112 www.bedlans.com

Fairbury's Little Blue River Trail

3rd & C Street

Added to Jefferson County in the fall of 2006 is the new hiking trail in Fairbury. Funded by federal, state and city grants, it was the project of a citizen's committee. Starting at the old dam site on south C Street, walkers can proceed to the Fairbury City Park or strike out across the old Rock Island Railroad Bridge and through the Flathead Wildlife Management Area, operated by the Nebraska Game and Parks Commission.

Fairbury Country Club

56881 - 709th Rd, Fairbury

Just south of Fairbury on the slopes of the Little Blue River Valley sits the Fairbury Country Club and Golf Course. Enjoy the picturesque and challenging layout of the course.

Fairbury City Park

Entrances at 8th & Maple or W 5th Street

This place packs in a bit of everything including a massive tree-lined route, the new aquatic center, a softball complex, an original wooden playground, the Legion baseball field, a horseshoe complex, the Isaac Outdoor Game Center, a community building, updated dump station and the Girl Scout Cabin. Situated at 8th and Maple Streets, touring the park on foot or by car highlights the beauty of small-town living.



PETERSEN

PLUMBING, HEATING & AIR CONDITIONING, LLC

Backhoe & Trenching | Residential & Commercial






1228 E St., Fairbury, NE

402-729-5565

www.petersenplumbingheatingac.com



What to Do & See in Jefferson County

Frontier Fun Park

Inside Fairbury City Park

Created from local children's designs, the park, located in Fairbury's City Park was the first park of its kind in the state of Nebraska. Citizens took on a major maintenance project in 2016 to keep the equipment in top shape.

Four-Corner Survey Marker

Located on the 6th Principal Meridian and 40th Parallel, this landmark was used in 1856 to legally describe Nebraska, Kansas, Colorado, Wyoming and South Dakota from this point west of the Missouri River. The marker can be reached by taking Highway 8 west to Reynolds, then turning south to Mahaska, KS. From here, it is one mile west and one mile north of Mahaska.

Jefferson County Courthouse

411 4th St, Fairbury

Built in 1891 of hand-cut limestone and situated on a square in downtown Fairbury at 411 4th, the building also features ceramic-fronted fireplaces in some offices and unique antique furniture in the courtroom. Renovated statues stand on top of the courthouse on three sides.

Jefferson County Speedway

At the Jefferson County Fairgrounds

Satisfy the need for speed by attending mini sprint, truck and $\frac{3}{4}$ midget races on the banked oval dirt track. Running April through September at the Jefferson County Fairgrounds located southwest of Fairbury, the Jayhusker Racing Association attract hundreds of fans each season. The 4th Annual Midwest Midget Championship will be July 17-18. The event will feature USAC National Midgets as well as Jayhusker Non-Wing Micros; two nights race fans will not want to miss.

Jefferson County Fairgrounds

5685 PWF Rd., Fairbury

Home to the annual Jefferson County Fair held every July, the fairgrounds includes the 4-H Building, Merchants Building, Horse Arena, Grandstand and livestock barns. The fairgrounds is also used for many community events as well as home of the Jefferson County Speedway and Jayhusker Racing.

Leisure Lake

South of Plymouth, 720th Road between 578 and 579th Ave

Centered around a 38-acre lake with 47 acres of land surrounding it, the Lower Big Blue Natural Resources District owns and maintains this primitive lake. Enjoy a day of hiking, fishing and hunting here.



Your bank goes where you go.

UBTgo **UBT**
Union Bank & Trust

Member FDIC ubt.com/go | 402.729.3337



HOMESTEAD LAND
COMPANY
FARM & HOME

Fairbury • Beatrice
315 5th Street
Fairbury, NE 68352
402-729-2195
www.homesteadland.com

Tyler Rosener
April Stone
John Bruna

Real Estate • Farm Management • Appraisals • Auction



We'll see you at the movies

For Showtimes
402-587-5324 • BonhamTheatre.org
[f BonhamTheatre](https://www.facebook.com/BonhamTheatre)

BONHAM
THEATRE

519 E Street
Historic Downtown Fairbury

Area Attractions



FAIRBURY
Smile Designs
Comprehensive Dentistry for All Ages.

Implants • Orthodontics • Wisdom Teeth
Dentures • Dental Hygiene Care

Jeffery D. Spahr, DDS • Janna E. Spahr, DDS

501 7th Street
Fairbury, NE 68352

(402) 729-6277
FairburySmile.com

EBS CONSTRUCTION
*Building Quality in Fairbury
Since 1985*

601 D St. • 729-6561
Bob and Sharon Elgert

SCHULZ & ASSOCIATES, P.C.
CERTIFIED PUBLIC ACCOUNTANTS

- Tax Preparation & Planning
Individual - Farm - Business
- Accounting & Auditing
- Payroll & Bookkeeping Services

contactus@schulzcpas.com
www.schulzcpas.com

106 Eastside Blvd
Beatrice, NE 68310
402-223-3598

300 6th Street
Fairbury, NE 68352
402-729-6137



A Full Service Salon

402.729.2200 | 409 7th Street | Fairbury, NE 68352

Tri-County Oregon Trail Monument

This marker is located five miles east and two miles south of Steele City. It gives the legend of the Oregon Trail through Washington County, Kansas and Gage and Jefferson County, Nebraska.

Wildlife Management Areas

Rock Glen - 706 acres located on the south end of Rock Creek State Historical Park.

Flathead - 259 acres of land features a tree-lined path for hikers to explore the area.

Rose Creek - A mixture of cropland, woods and grassland make up Rose Creek located on two parcels (664 combined acres) of land south of Jade Road east of Thompson. The locally famous McDowell Mausoleum is situated in the second section. Hunters are attracted to the area during deer and turkey season.



McNish Park

Entrances on J Street between 13th and 11th

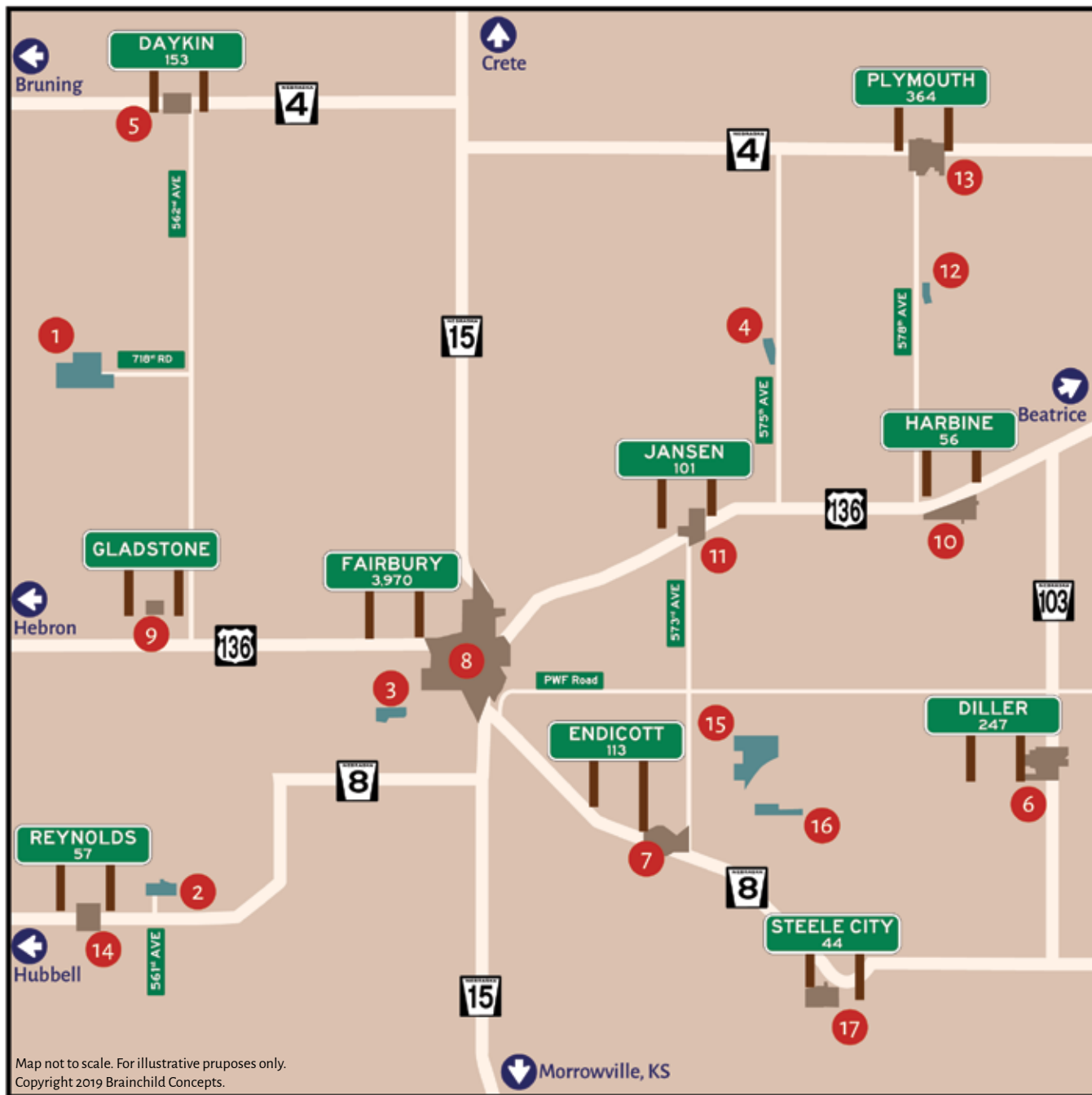
A drive or stroll through this shady Fairbury park details the rolling landscape and stone-lined pond. The area also boasts a disc golf course and newly updated playground equipment. Found at 14th and I Streets, visitors can enjoy a picnic shelter, the Boy Scout Cabin, and a relaxing waterfall. The fountain on the north end of the park has undergone recent restoration.

McDowell's Rose Creek Mausoleum

McDowell's Tomb, located south of Rose Creek, shows the work of Fairbury resident Nelson L. McDowell, a wealthy bachelor who spent a decade carving the two-room mausoleum with a hammer and chisel.

Now under the jurisdiction of the Nebraska Game and Parks Commission, the site bears the carvings thousands of visitors left as their own legacy. Ironically, following his death in 1937 from a car-train accident, McDowell was buried in the Fairbury Cemetery. The trek to this site via unmarked trail may prove difficult for inexperienced hikers. Hiking shoes recommended.

Jefferson County Map



1. Alexandria State Lakes
560th Ave & 718th Rd
402-729-5777

2. Buckley Creek Rec Area
1/2 mile north of Hwy 8 on
561st Ave
402-364-2145

3. Crystal Springs Park
SW of Fairbury off
Crystal Springs Road on
Walt Maughn Drive
402-729-2148

4. Cub Creek Rec Area
3 miles north of Hwy 136
on 575th Ave
402-228-3402

5. Daykin

6. Diller

7. Endicott

8. Fairbury

9. Gladstone

10. Harbine

11. Jansen

12. Leisure Lake Rec Area
57838-57850 720th Road
Plymouth, NE 68424
402-228-3402

13. Plymouth

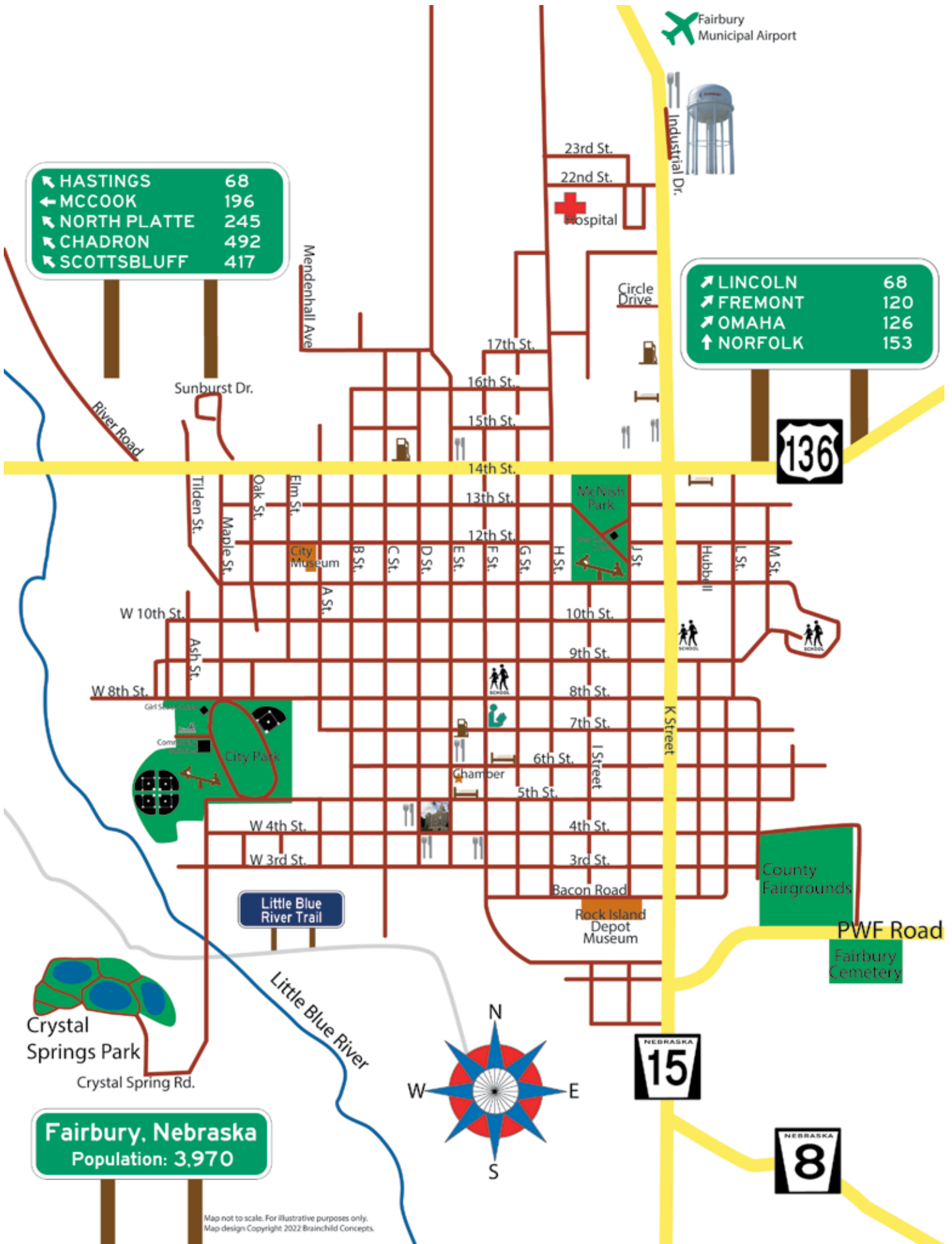
14. Reynolds

15. Rock Creek Station
57426 710th Rd
Fairbury, NE 68352
402-729-5777

**16. Rock Glenn State
Wildlife Management
Area**

17. Steele City

City of Fairbury Map



Lodging

A Place to Lay Your Head

Jefferson County has several lodging choices to consider. All are clean and well-maintained; warm hospitality, no extra charge!

The Edgewood Hotel & Suites - 1503 K Street, Fairbury
402-587-5082 - edgewood-hotelandssuites.com

Featuring hot breakfast bar, exercise room, swimming pool, conference room, and guest laundry. Each room includes a microwave, refrigerator, coffee service and high-speed internet.

The Grayhouse Inn - 615 6th Street, Fairbury
402-990-2621 - Grayhouseinn.com

Once a boarding house, the Grayhouse Inn is a large historic home that underwent a total renovation in 2016.

The Grayhouse Inn features a total of nine rooms, three of which are two-room suites. Each room has its own private bath. Two of the suites are located on the first floor.

There is a large living room and eat-in kitchen with full breakfast, served daily. Wireless internet available. Nightly, weekly rates available, including special rates for the entire house. Non-smoking property, small pets allowed with preapproved pet deposit.

On The Bricks Lofts & Venue - 510 E Street, Fairbury
402-318-7447 - onthebricksloftsandvenue.com

Featuring full suites for short and long term stays in fully furnished loft apartments. The Venue can host weddings, community events, birthday parties, company meetings and gatherings. Can host over 300! Call for rates and reservations.

The Capri Motel - Highways 15 and 136, Fairbury
402-729-3317

Standard motel rooms or extended-stay suites with kitchenettes. Pet-friendly motel. Handicap-accessible rooms available. Free local calls, cable TV and smoking or non-smoking rooms. Truck parking. Cold weather hookups. Major credit cards accepted.

FAIRBURY'S FINEST

Capri Motel

1100 14th Street

P.O. Box 383 Phone
Fairbury, Nebr. 68352 402-729-3317

THE
EDGEWOOD
HOTEL & SUITES

Free Parking • Free Wifi • Hot Breakfast • Heated Indoor Pool
Newly Remodded Fitness & Conference Room

1503 K Street • Fairbury, NE
402.587.5082

THE COTTAGE BOUTIQUE

516 5th St, Fairbury, NE 68352
402-729-5814
repurposedcottageboutique@gmail.com



Come in and take a cruise around:
Inspirational Alley, Crystal Rock Cul-de-sac,
All Natural Lane, The Thrifty Coral,
Heart Made Drive, Remade to Love Boulevard
and The Unfloral Floral Shop Terrace
Unique gift ideas galore!

Harvest Chinese Restaurant

616 E Street | Fairbury, NE • 402-729-6233



Daily Chinese Buffet - Japanese Sushi by Phone Order

DILLER COMMUNITY FOUNDATION FUND
INVITES YOU TO:

THE ANNUAL DILLER PICNIC

June 15–17, 2023

The Diller Picnic is an over 125-year tradition. Enjoy three days of food, fun, and festivities including a tractor pull, car show, bull riding and parade!



**Diller Community
Foundation Fund**
Together We Are Ensuring The Future!



FULL-SERVICE CAMPER PADS AVAILABLE

12 Hook-Ups | Free Wifi | Call 402.202.7806



We envision a future where all are inspired to dream, grow and give back.

Learn more at www.nebcommfound.org/give/diller-community-foundation-fund
or find us on **Facebook**.

An affiliated fund of Nebraska Community Foundation

COME FOR THE DILLER PICNIC, STAY FOR OUR SMALL BUSINESSES



Behrends Service

Gas station, auto repair and tires. Call to book an appointment or for service questions.

305 Commercial Street | 402.793.5530

Blondie's Salon

Full-service salon and women's clothing boutique.

320 Smith Street | 402.793.5300

Magnolia & Main Boutique

Big fashion in small town Nebraska. Top notch customer service and quality items.

320 Commercial Street | magandmain.com

Open Saturdays 9:00 AM–1:00 PM

The Field

Home-cooked lunch and dinner specials and cold drinks. Dine-in or take-out.

415 Commercial Street | 402.793.8557

Open M–F 6:00 AM–12:00 AM, Saturdays 10:00 AM–12:00 AM

The Store – Diller Locker Company

Groceries, fresh meats, cheeses, smoked sausages, jerky, alcohol and more.

409 Commercial Street | 402.793.5820

Open M–F 8:00 AM–6:00 PM, Saturdays 8:00 AM–12:00 PM

Express lunch meals M–F 11:00 AM–1:00 PM

Camping

Enjoy the Great Outdoors

If you are traveling to the Fairbury area in an RV or camper, you'll find beautiful camping options. All areas are clean, well-maintained and offer various recreational activities to enhance your stay.

Alexandria State Lakes*

12 miles northwest of Fairbury. Small 55-acre recreation area with two lakes. Fishing, picnic shelters and campsites. Basic camping and 45 non-pad sites with 30-amp & 50-amp electrical hook-ups. Picnic tables, grills, shelters, drinking water, modern restrooms, playground, and a trailer dump station. Nebraska Parks permit required.

Village of Diller Campground

15 miles southeast of Fairbury. Diller Park with 12 camper hook ups with Wi-Fi access, water, sewer and trash pick up. and electricity. The park is shaded, serene and offers a playground and picnic shelter with restrooms. 402-202-7806

Historic Steele City Campground

12 miles southeast of Fairbury. Available year round. Playground, Bar and Grill, Post Office and pay phone. Camper hookups. 402-442-2360 or 402-613-1299

Buckley Creek Rec Area

14 miles southwest of Fairbury. Tent camping plus 4 camper hook ups. 402-364-2145

Cub Creek Rec Area

8 miles west of Fairbury. Tent camping. 402-228-3402

Endicott RV Park

7 miles southwest of Fairbury on Hwy 8
219 West Ridge Street, Endicott. 10 new spots, good location, complete hookups, 50 & 30 amp breakers. Open year round. 402-729-5621 or 402-587-1900

**A valid Nebraska State Park entry permit is required year round for all motor vehicles entering any state park, state historical park or state recreation area.*

Crystal Springs Park

Southwest of Fairbury. Three lakes for great fishing and camping. Newly updated camping pads with electrical and water hookups. Restrooms and showers available May 1 - October 15. Playground, horseshoe court and picnic shelters. Reservations required for camping pads, visit FairburyNE.org or call 402-729-2148.

Rock Creek Station State Historical Park*

Six miles southeast of Fairbury. Modern campground with paved pads. 30-amp electrical hook-ups, camp grill or fire ring and picnic table. Tent sites have picnic table and grill or fire ring. Horse camping available. Large picnic shelter with electricity, tables, grills, water and toilets available and may be reserved for a fee. The beautiful 3,200 sq. ft. visitor's center includes two wings of displays, lobby and theater with slide presentation upon request. While the park is open year-round, the visitors center, showers and bathrooms are available mid April - late October. Nebraska Park Entry Permit required. Call 402-729-5777. OutdoorNebraska.org



Scherbarth
ACE
The helpful place.
402-729-6184
North HWY 15 | Fairbury, NE 68352
Open Monday-Saturday: 7 a.m. - 6 p.m.



"Bumper to Bumper We Can Fix It"

AUTO SERVICE
M&D
TOWING & REPAIR

We're Equipped to Work on ALL Makes and Models
Including Large Truck Repair

Light & Heavy Duty Towing

402-239-8772 - 24 Hour Towing
402-729-2478 - Repair

620 C Street • Fairbury
www.manddautoservice.com

Steele City, Nebraska

Celebrating 150 Years in conjunction with the
53rd Annual Tractors & Treasures

Sept. 16 & 17, 2023

Tractor Show, Flea Market and Music on Grounds Both Days

Saturday Events

11 a.m. Car Show

Noon Garden Tractor Pull

1 p.m. Antique Tractor Pull

Sunday Events

9 a.m. Tractor Drive

1 p.m. Church Service

3 p.m. Parade

Both Days Events

Blacksmith Demonstrations

Old Farm Machinery Display

Tours of Historical Buildings



For Updates & Complete Listing - More events to be Announced

Facebook: Steele City Flea Market, Fairbury.com or dk cows.com

Jefferson Co. Historical Society 402-729-5131, Tractors 402-446-7486, Steele City 402-442-2353



150 Years of

Family, Food & Fun

featuring Garry Moore Amusements

Home of the
Midwest Midget Championship
July 14-15

Live Music & Beer Garden
Drunk Monkey, July 14
Kill Creek Rising, July 15

County Fair Parade
Celebrating 150 Years, July 9th

Horse Arena Events
July 12 & 13 Barrels, Bulls & Mutton Bustin'
July 14 Extreme Trail Ride Challenge
July 15 Bits & Spurs Fun Horse Show

Many Special Events
Antique Road Show - Tractor Show
Miss Jefferson County Crowning
Kids Pedal Pull - Photo Contest
Church Service - Mud Tug of War
Ingathering - Hypnotist
Special 150th Program - and More!

Details at JeffCoFair.us

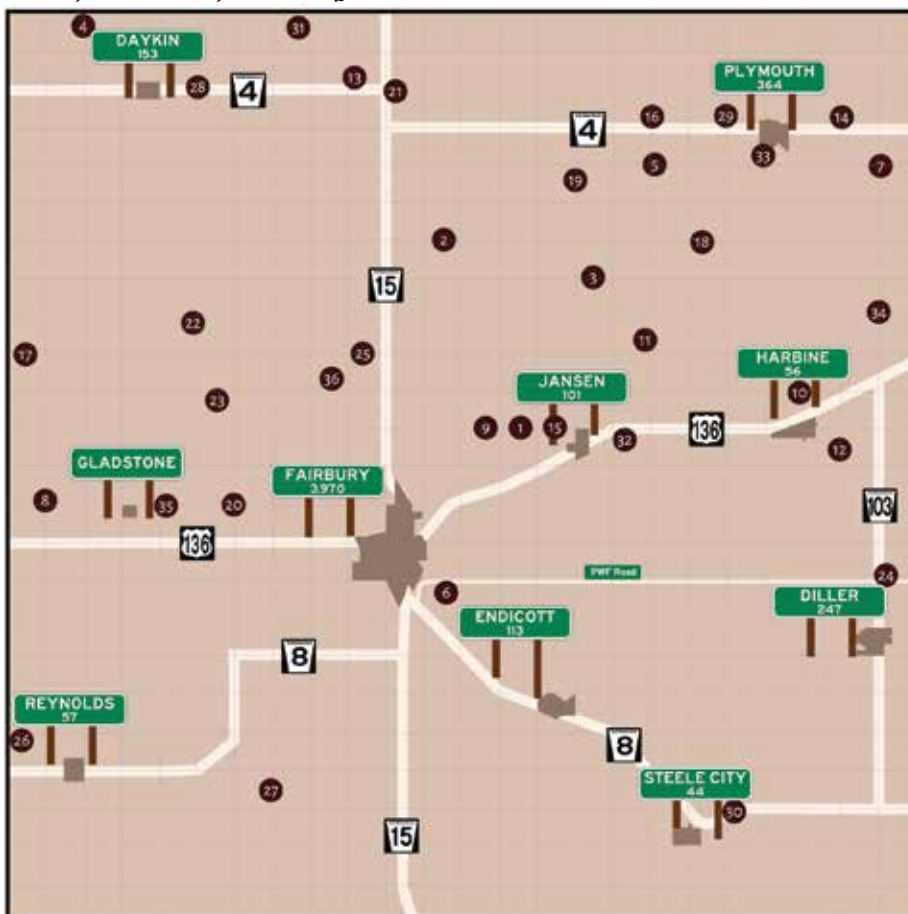
Facebook: [Jefferson County Fair \(Nebraska\)](https://www.facebook.com/jeffersoncountyfairnebraska)

Discover a long-lost relative, a distant ancestor, or data on a missing family member

1. **Bartel** - 715th Rd between 571st & 572nd Ave
2. **Bower** - 720th Rd between 569th & 570th Ave
3. **Cub Creek aka St. Paul's Evangelical** - 719th Rd between 573rd & 574th Ave
4. **Eureka aka Daykin** - Near 726th Rd & 560th Ave
5. **Emanuel Evangelical Church** - Near 722nd Rd & 575th Ave
6. **Fairbury** - 56924 PWF Rd
7. **Friendship aka Kilpatrick** - Near 722nd Rd & 581st Ave
8. **Grace Lutheran aka Trinity Lutheran** - Near 713th Rd & 559th Ave
9. **Grandy** - 715th Rd between 570th & 571st Ave
10. **Harbine** - Near 716th Rd & 579th Ave
11. **Hildebrandt** - 575th Ave between 717th & 718th Rd
12. **Hope United Church of Christ** - 580th Ave between 714th & 715th Rd
13. **Immanuel Lutheran - Daykin** - Near 724th Rd & 567th Ave
14. **Immanuel Lutheran - Plymouth** - Near 723rd Rd & 580th Ave
15. **Jansen** - 715th Rd between 572nd & 573rd Ave
16. **Megli-Yost** - Near Hwy 4 & 575th Ave
17. **Meridian aka German Presbyterian** - Near River Rd & Navy Ave
18. **Old Plymouth** - 720th Rd between 576th & 577th Ave
19. **Peace Lutheran** - 573rd Ave between 721st & 22nd Rd
20. **Pleasant Hill** - Near 713th Rd & 564th Ave
21. **Pleasant View** - Near 724th Rd & 568th Ave
22. **Powell aka Keeney aka Knispel** - Near 718th Rd & 563 Ave
23. **Prairie aka Moles** - Section 25, Meridian Precinct
24. **Prairie Home aka Diller** - PWF Rd & 581st Ave
25. **Richland Center** - 717th Rd between 567 & 568th Ave
26. **Rose Creek aka Reynolds** - 558th Ave between 707th & Hwy 8
27. **Silver Creek** - 565th Ave & King Rd
28. **St. John's Evangelical Lutheran** - Hwy 4 between 562nd & 563rd Ave
29. **St. Paul's Lutheran** - Near 577th Ave & 723rd Rd
30. **Steele City** - 577th Ave off Hwy 8
31. **Swan Creek aka Humphrey** - 726th Rd between 565th & 566th Ave
32. **Thiessen** - Hwy 136 near 574th Ave
33. **Woodlawn** - S County Rd, Plymouth
34. **Zion Lutheran** - Near 718th Rd & 581 Ave
35. **Zion Countryside Church** - 713th Rd & 562nd Ave

For more specific directions consult, <http://genealogytrails.com/neb/jefferson/cem/cemetery.html>

*Country cemeteries may be located off unmaintained, dirt roads. *Proceed at own risk.*



36. George Winslow's Grave - Located about 3 miles north of Fairbury, then west on 716 Road 1 1/2 miles, the George Winslow gravesite is north of the road, in a pasture. The ruts of the Oregon Trail are still visible there. Winslow's grave earns its distinction for being the only grave on the entire trail marked with a stone.



The gravesite is on private property, but the property owners allow visitors. Please be respectful of their property and the gravesite, and remember to close any gates you may have opened.

The Oregon Trail claimed the lives of many that attempted the journey. Many Mormons died while camped along the trail. In Jefferson County, the Big Sandy crossing on the trail was the scene of many of these burials.

Area Churches

Fairbury

American Lutheran

12th and K Streets

Assembly of God

11th and D Streets

Fairbury United Methodist

605 E Street

Faith Lutheran (AFLC)

1630 I Street

First Baptist

901 F Street

First Christian

2625 H Street

First Church of God

12th and E Streets

First United Presbyterian

2310 H Street

Foursquare Gospel

Sixth and H Streets

Grace Lutheran (LCMS)

1100 G Street

St. Michael's Catholic

Eighth and F Streets

Seventh Day Adventist

11th and J Streets

Gladstone

Zion Countryside Church

56205 713 Rd.

Diller

St. Paul Ev. Lutheran

114 Lavelle St

Endicott

Endicott United Methodist

119 W Reynolds

Jansen

Jansen Bible Church

405 Nebraska

St. Paul's United Church of

Christ Cub Creek

57350 719 Road

Assembly of God

500 Broad

Steele City

Steele City Presbyterian

311 East Main

Harbine

Zion Lutheran

58115 718 Rd

Plymouth

Peace Lutheran ELCA

72165 573rd Avenue

Peace United Methodist

103 E. Main Street

St. Paul's Lutheran-WELS

106 E. Hwy. 4

Daykin

Immanuel Lutheran

5 miles east of Daykin

Daykin United Methodist

Hwy 4 & Nichol Ave

St. John's Lutheran

501 Francis Street



Globe Rexall Pharmacy

Nathan Clabaugh R. Ph., Pat May R. Ph., Betty Devries R. Ph.
424 E Street • Fairbury • 402-729-2620

MEMORIES & MORE ANTIQUE MALL
402.729.5464
Open Monday thru Saturday

The Area's "Antique" Antique Mall
West Side of the Square
in History Downtown Fairbury, Nebraska

We're right on your way home!

Ray's Apple MARKET
YOUR NEIGHBORHOOD FOOD STORE

Deli | Bakery | Video | Fresh Produce | Beer, Wine, Spirits

1415 K Street | Fairbury, NE
402-729-2355 | www.RaysAppleMarkets.com

Your Source For
STARR BUCKOW
Insurance Agency
Every
Known Kind
of Insurance

STARR BUCKOW
Insurance Agency, Inc.
Bill Runge, Barry Schwab, Brooke Schwab
417 5th St. • 729-6121
agents@starrbuckow.com

HOME AUTO
FARM COMMERCIAL
LIFE HEALTH

SCHULTIS & SON INC.
Land, Residential & Commercial Real Estate
Live & Online Auctions

222 W 14th Street, FAIRBURY, NE 68352
(402) 729-2435
www.schultis.com

Kansas Auctioneer NAA Nebraska Auctioneers Association REALTOR

Local Services

Hospital

Jefferson Community
Health & Life
2200 H Street
402-729-3351

Clinic

Jefferson Community
Health & Life -
Fairbury Clinic
2200 H Street
402-729-3361

Optometrist

GrandView EyeCare
523 E Street
402-729-6162

Dentist

Fairbury Dental Associates
416 4th
402-729-6177

Fairbury Smile Designs
501 7th Street
402-729-6277

Chiropractor

Tatro Chiropractic
414 E Street
402-729-5181

Rental Cars

Wheel N Deal Auto Sales
1832 K Street
402-729-5281

Car Wash

Maatsch's Sinclair
1515 K Street
402-729-2455

Splash & Dash Car Wash
921 14th Street
402-729-3276

Pharmacy

Globe Rexall
424 E Street
402-729-6177

Korbel Drug
405 5th Street
402-729-6277

Walmart Supercenter
2831 N Hwy 15
402-729-3755

Towing Services

M&D Auto Service &
Towing
620 C Street
402-239-8772

Painter Paul LTD Towing
808 S. K Street
402-729-6313

TAS Total Auto Services
408 6th Street
402-587-1655

Laundromat

Dirty Biz Laundry
521 C Street
402-217-0784

Grocery Store/ Butcher

Den's Meat Distributing
115 14th Street
402-729-6199

Diller Locker - The Store
409 Commercial, Diller
402-793-5820

Ray's Apple Market
1415 K Street
402-729-2355

Fuel/Convenience

Casey's General Store
622 E Street
402-729-6664

Maatsch's Food Shop
1515 K Street
402-729-2455

Maatsch's Express
303 14th Street
402-729-5329

Daykin Country Store
708 Francis Street, Daykin
402-446-7292

Plymouth Country Store
216 Hwy 4, Plymouth
402-656-3905

Cell Phones

Victra - Verizon Wireless
528 E Street
402-729-2025

Selectel Wireless
425 D Street
402-587-5091

Locksmith

Lock and Key for Less
402-239-1692

Painter Paul
808 S K Street
402-729-6313

Liquor Store

K&D Liquor
1317 E Street
402-587-5009

Florist

Pictures & Petals
415 D Street
402-729-2049

Sims Florist & Gifts
420 4th Street
402-729-5125

Auto & Tire Repair

Alan's Automotive
1401 E Street
402-729-2117

Behrends Service
305 Commerical St, Diller
402-793-5530

Farmers Cooperative
1105 23rd St
402-729-6147

Farmers Cooperative
602 Jefferson, Daykin
402-446-7285

Farmers Cooperative
503 Maple, Plymouth
402-656-4000

M&D Auto Service
620 C Street
402-729-2478

Riverside Chevrolet
601 4th Street
402-729-2275

TAS Total Auto Services
408 6th Street
402-587-1655

TO Haas Tire & Auto
1222 E Street
402-729-6164

Twin Rivers Ford
601 5th Street
402-729-2231



Listings subject to change without notice.

Boutique

Blondie's Salon
320 Smith St, Diller
402-793-5300

Mag & Main Clothing Co.
320 Commerical St, Diller

Belle Rose Boutique & Coffee
412 E Street
402-587-5051

Notions a Good Life
Boutique
524 E Street
402-613-7541

Daily Grind Boutique
316 N Madison, Plymouth
402-200-8646

The Cottage Boutique
516 5th Street
402-729-5814

Greenhouse

Fairbury 4th St. Greenhouse
308 W 4th Street
402-729-3728
402-729-3161

Beetley's Gardens
203 3rd Street
402-729-2376

Auto Parts

NAPA - Action Auto Supply
520 4th St
402-729-2221

Auto Value - Arnold Motor
Supply
607 3rd St
402-729-2267

Veterinarian

Fairbury Animal Clinic
805 S. K Street
402-729-2304

Plymouth Veterinary Clinic
402 S County Rd.,
Plymouth
402-656-3002

Winter's Countryside Vet
Clinic
3030 Industrial Drive
402-729-2204

Emergency

Services
EMERGENCY - 911

Jefferson County
Sheriff's Office
606 3rd Street
402-729-2284

Jefferson County
Ambulance
606 3rd Street
402-729-3304

Jefferson County
Emergency Management
313 S K Street
402-729-3602



Optimist
INTERNATIONAL
Optimist Club of Fairbury
FairburyOptimists.org
Facebook.com/FairburyOptimists

JOIN THE
OPTIMISTS
BRINGING OUT THE BEST IN
OUR YOUTH OUR COMMUNITY AND OURSELVES



Parkview
APARTMENTS



**Income based
apartments featuring:**

- Non-Smoking
- Security Features at each entrance
- New Elevator
- New Boiler/Heating & Cooling System
- Laundry on each floor
- New 3 bedroom unit
- New Boulevard Lighting

105 W 5th Street, Fairbury
Apply Online Anytime at parkview105.org



**Smith
Schafer
Davis**
LLC

Robert M. Schafer
Jeffery W. Davis
Gregory D. Kratz
Duane W. Smith *of Counsel*

609 Elk Street, Beatrice
510 D Street, Fairbury
402-223-5257 - 402-729-3331

ATTORNEYS & COUNSELORS AT LAW

**SIDE TREK
BAR & GRILL**

THIRSTY THURSDAY

**WING
NIGHT**

**OVER 2 MILLION
WINGS SOLD!**

OPEN 365 DAYS A YEAR!
402-754-4391 • HARBINE, NE

Hunting and Fishing

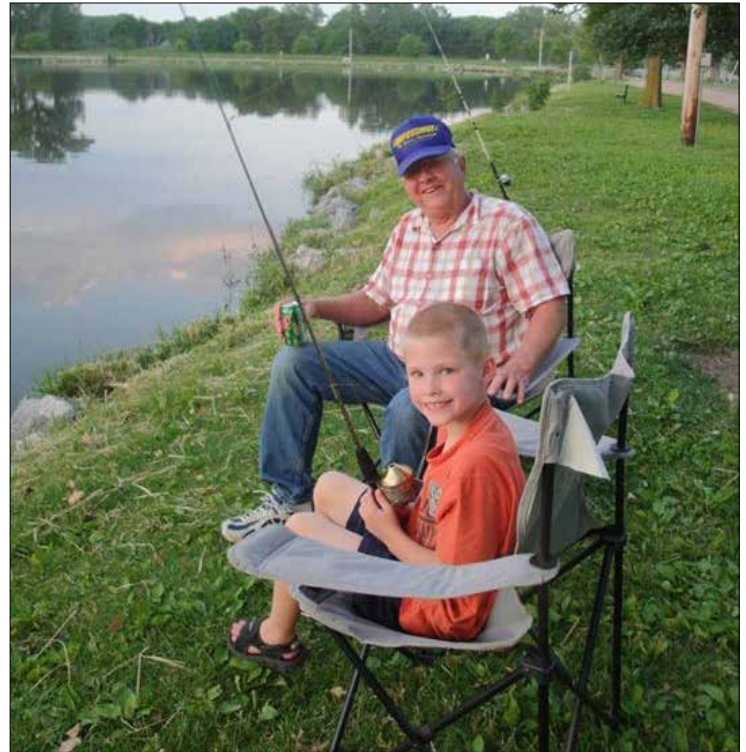
A hunting and fishing we will go

Whether the target runs on two legs or four, flies, sits or swims, it can be found in abundance in Jefferson County, Nebraska's bountiful hunting and fishing spots.

Six publicly-operated Wildlife Management Areas, including Alexandria, Alexandria Southwest, Flathead, Rock Glen, Rose Creek and Rose Creek West, provide hunters with opportunities to bag a deer, dove, pheasant, quail, grouse, rabbit, squirrel, turkey or waterfowl across Jefferson County. Numerous private hunting fields complete the area. Local businesses can assist trackers with archery, guns and ammunition needs during the season. Area guides can also help visiting sports enthusiasts make the trip a success.

Fishermen can try their luck at four public fishing spots and bring home bass, catfish and blue gill. Anglers can cast a line at Crystal Springs Park in Fairbury or stake out a claim on the Little Blue River near Fairbury. Alexandra State Lakes east of Alexandria and Cub Creek also offer great options for those looking to make a catch.

Jefferson County, Nebraska is a true gem for hunters and fishermen, searching for a little getaway and a chance to bag a bird or a buck or grill their own catfish dinner.



I fish therefore I am Fishing enthusiasts of all ages will enjoy the numerous fishing spots in Jefferson County.

SPLASH & DASH INC.
CAR WASH

921 14th St • Fairbury, Nebraska
402-729-3276

City of Fairbury
Nebraska
Founded to move forward.

We invite you to explore all that Fairbury has to offer!

Recreation | Dining | Shopping | History & More!

City Offices
612 D Street, Fairbury, NE

Spencer Brown, Mayor

402-729-2476
www.FairburyNE.org

410 E Street, Fairbury • 402-587-5116

Services:
Tanning, UV Free Spray Tanning, Salon Services,
Pedicures, Acrylic, Dip & Gel Nails,
Red Light Services

Sheila Adams,
Owner
Raylea Adams,
Salon Manager
Brandi Adams,
Tanning Manager

Hours:
24/7 with Membership
Non Members
Mon - Fri 8 a.m. - 6 p.m.
Sat 8 a.m. - 12 p.m.

Fairbury Animal Clinic



Guy Stewart, D.V.M.
Tyler Kimberlin, D.V.M.
Brandon Sinn, D.V.M.

805 South K Street
Fairbury, NE 68352

fairburyac@gmail.com
(402)729-2304 www.fairburyanimalclinic.com

ANYTHING ELECTRIC
Heating & Air Conditioning

310 E Street, Fairbury
402-729-2353

Marvin Stelling, Owner
State Licensed Electrician



AWE
WEALTH MANAGEMENT
ASSESS | VALIDATE | EXECUTE

Assess
Validate
Execute

Our mission is to assess your financial situation, validate your goals and data and help you execute your long-term financial plan.

Michelle Holliday, CFP®, AWMA®
Jared Knobbe, CFP®
LPL Financial Advisors
803 5th St., Fairbury, NE 68352
Office: 402-429-3065
mholliday@ave-wealth.com | jknobbe@ave-wealth.com
www.ave-wealth.com



Securities and advisory services offered through LPL Financial, a registered investment advisor, Member FINRA/SIPC

30996-FPL(03/17)

Member **FDIC**

SBO

Member **LCBA**

STATE BANK OF ODELL
Services Just For You

- Internet Banking • Mobile Banking • Bill Paying
- ATM Machine • Visa Check Card • Night Deposit

ODELL • DILLER, NEBRASKA
Main: 402-766-3720 | Branch: 402-793-3721
www.StateBankOfOdell.com

Twin Rivers

AUTO GROUP







FAIRBURY **USED MEGA STORE** BEATRICE

601 5th Street
Fairbury, NE 68352
402-729-2231

TWINRIV.COM
TWINRIVERSFORD.COM

529 West Court
Beatrice, NE 68310
402-228-3311

Historic Landmark Spotlight



Trail Days Visitors to Rock Creek Station listen to a reading prior to the buffalo stew cookout during Trail Days.

Rock Creek Station

57426 710 Rd. Fairbury, NE

Located southwest of Fairbury, Rock Creek Station was established along the Oregon-California Trail in 1858 as a road ranch to sell supplies and other services to emigrants as they made their way West. The station also served as a relay station for the Pony Express as well as a stagecoach stop for the Overland Stage.

In 1861, Rock Creek Station became notorious one fateful day in July when James Butler Hickok killed David McCandles there. It was then that "Wild Bill" Hickok began his bloody career as a gunfighter.

Visitors can learn about the Oregon Trail, Pony Express and still see the deep ruts carved by pioneer wagon trains. The ruts cover 1600 feet to the northwest of the old station.

Open year round, the park encompasses 350 acres of prairie hilltops, timber-studded creek bottoms, and rugged ravines. It features an interpretive center, picnic areas, hiking and nature trails, tent camping, horse camping and a modern campground with services. Trail Days in June showcase living history demonstrations and a cookout.



Rock Creek Station As a State Historical Park, visitors to Rock Creek Station will need a Nebraska Game and Parks Park Entry Permit.

During the summer step back to 1860s ranch life; depicting the events of 150 years ago. We invite you to live a day in the life of the early Nebraskans who laid claim to the Great Plains. Experience this, 9 a.m. - 5 p.m. every 3rd Saturday of the month from May - October. Learn more about Rock Creek Station State Historical Park at outdoornebraska.gov/rockcreekstation.



Husker Rehab 402-729-2639

Offering physical & occupational therapy,
athletic consults, dry needling
& pre/post surgical care.

504 E Street, Fairbury, NE 68352
www.HuskerRehab.com



KEVIN & MONICA SCHMIDT
DUSTIN SCHMIDT
NATHAN SCHMIDT
DEVAN SCHMIDT



402.729.5514
schmidtsinc@hotmail.com
56895 Hwy 136
Fairbury, NE 68352

Nationally Known
Furniture • Bedding • Flooring • Decor

Barber

Home Furnishings



404 4th Street, Fairbury | 402.729.3240
www.BarberHomeFurnishings.com

Helping Nebraskans Grow Futures.

We are First Tri-County Bank. Your hometown Nebraska Bank.



First Tri-County Bank

402 E. Main St., Plymouth, NE
P. 402.656.3885 F. 402.656.3117
www.firsttri-countybank.com

A Full Service Bank. Member FDIC.

Road Runner

BAR & GRILL



Find Us on
Facebook
Search:
Road Runner
Bar and Grill in
Daykin, Nebraska

705 Francis St, Daykin, NE 68338

402-446-7346

Chappell

Roofing Inc.

Commercial & Residential Roofing
Seamless Gutters

Free Estimates • Lifetime Workmanship Guarantee
Licensed Roofing Contractors in NE & KS • Fully Insured

302 E St, Fairbury, NE

402-729-3233

www.ChappellRoofing.net



All rooms feature a private bath, high speed internet service and cable TV.



Call 402.587.4026 to book your stay today

www.GRAYHOUSEINN.com

615 6th Street, Downtown Fairbury



MICK VOCELKA
Realtor®

402-990-2621 cell

402-291-2500 office
402-933-4777 fax

Mick@HikeRealEstate.com
www.HikeRealEstate.com

421 D St • Fairbury, NE • 68352



Angie's Attic

Selling vintage, repurposed items, furniture,
glassware and costume jewelry.

402-587-5006

West Side Courthouse Square

421 D Street

Downtown Fairbury



Like us on Facebook!



2023 Community Events Calendar

May - August

Jayhusker Racing

Jefferson County Speedway
jeffersoncountyspeedway.com

May 20, Saturday

FREE Park Entry & Fishing Day

Rock Creek Station &
Alexandria State Lakes
402-729-5777
ngpc.rock.creek.station@nebraska.gov

May 26-28, Fri-Sun

Fairbury Girls Softball Invitational

Fairbury Softball Complex
Fairbury City Park
402-587-0432

June 3, Saturday

Abate #7 Steele City Ride-In Bike Show

The Salty Dog
Steele City
402-442-2233

June 2-3, Sat & Sun

Rock Creek Station Trail Days

Rock Creek Station
402-729-5777
ngpc.rock.creek.station@nebraska.gov

June 2-3, Sat & Sun

Rock Island Rail Days

Rock Island Depot
402-729-5131

June 16, Friday

Pony Express Re-Ride

Eastbound Hwy 53 in Thayer
Co. to Steele City (KS Line)
402-729-5629
Trail Captain Kevin Riggle
nationalponyexpress.org

June 15-17, Thurs. - Sat.

126th Diller Picnic

Diller
www.DillerPicnic.net
Facebook.com/DillerPicnic

July 4, Tuesday

10 a.m. Parade, Dusk VFW Fireworks Annual Shriner's Flea Market

Fairbury City Park
fairburyfleamarket@gmail.com
FairburyFleaMarket.com

July 9, Saturday

Jansen Fun Day

Jansen
Andrew at 402-300-0644
or Eddie at 402-300-1098

July 12-16, Wed - Sun

150th Anniversary Jefferson County Fair

Jefferson Co. Fairgrounds
Fairbury
402-729-3487
www.JeffCoFair.us

July 14-15, Fri - Sat

Midwest Midget Championships

Jefferson Co. Speedway
Cody Brewer 405-823-8095

Aug. TBD, Saturday

Plymouth Annual Celebration

Downtown Plymouth

Sept. 10, Sunday

9 a.m. - 4 p.m. Annual Museum Car Show

Downtown Fairbury
402-671-6879
fairburycitymuseum@diodecom.net

Sept. 16-17, Sat-Sun

150 Anniversary Steele City Flea Market/Old Farm Machinery Show

Steele City
402-446-7486
402-729-5805

Oct. 6-8, Fri-Sun

Heritage Highway Trail of Treasures

Highway 136
Flea Market / Garage Sales
www.heritagehighway136.com

October 2, Saturday

Lord's Acre Festival

Endicott 402-729-6048

Nov. 4, Saturday

32nd Annual Frost Frolic Holiday Market

Jefferson Co. Fairgrounds
402-300-1139
www.FrostFrolic.org

Dec. 1, Friday

Miracle on the Square Festival of Trees

Santa & Free Wagon Rides
Downtown Fairbury
402-729-3000

March TBA, 2024 Saturday

10 a.m. - 5 p.m. Shamrock Shuffle 5K Run/Walk/Crawl

Jefferson Co. Fairgrounds
402-729-3000
www.fairburychamber.org



March 30, 2024, Saturday

1 p.m. Chamber Easter Egg Hunt

Courthouse Lawn, Fairbury
402-729-3000
www.fairburychamber.org

2 p.m. Diller Easter Egg Hunt

Diller Park

April TBD, Sunday

12 - 3 p.m. Plow Day

2 miles south & 1/2 mile east of
Fairbury on Hwy 8.
402-729-3109 or
402-446-7486

April 6, 2024, Saturday

9 a.m. - 3 p.m. Annual Cat's Meow Spring Market

Jefferson Co. Fairgrounds
402-300-1139
www.CatsMeowSpringMarket.org

April TBA, 2023, Saturday

6 p.m. - 9 p.m. Pork 'N' Pints Beer & Wine Tasting Festival

VFW, North K St., Fairbury
402-729-3000
www.fairburychamber.org

All times and dates subject to change.

**Visit www.FairburyChamber.org or
call the Chamber at 402-729-3000 for most current info.**



~Collision Specialist~

Owners
Mike & Lee Horky

619 5th Street
Fairbury, NE

402-729-6331
mhpaintbody@windstream.net

JEFFERSON COMMUNITY Health & Life

2200 H Street, Fairbury
402-729-3351 • JCHearthandLife.org



Inspiring a Lifetime of Health

Burkley Fitness Center • Cedarwood Assisted Living

Gardenside • Home Health

Sports Medicine & Rehabilitation Services

Fairbury Clinic - 402-729-3361



Services:

- Family Medicine Clinic
- 24-hour Emergency Care
- Medical, Surgical, Swing Bed and Long-Term Care
- Specialty Outpatient Clinics
- Home Health Care
- Cardiac and Pulmonary Rehabilitation
- Physical, Occupational and Speech Therapy
- Education Programs & Support Groups

Burkley Fitness Center offers:

- Heated Indoor Pool
- Whirlpool
- Activity Court
- Exercise Classes
- Complete line of weight training & cardiovascular equipment
- Membership & Daily Rates Available

Learn more call 402-729-6139

Packaged in convenient environmentally friendly resealable pouches for portion control and freshness, bacon lovers will see and taste the difference!



Fairbury[®]



WESTIN PACKAGED MEATS

Fairbury Operations
601 Bacon Road | Fairbury, NE
402 729 3379